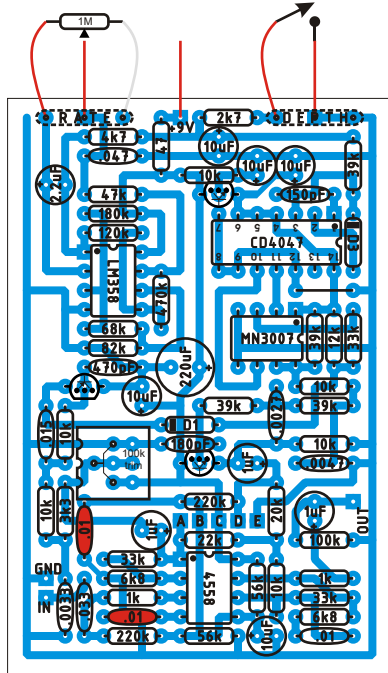
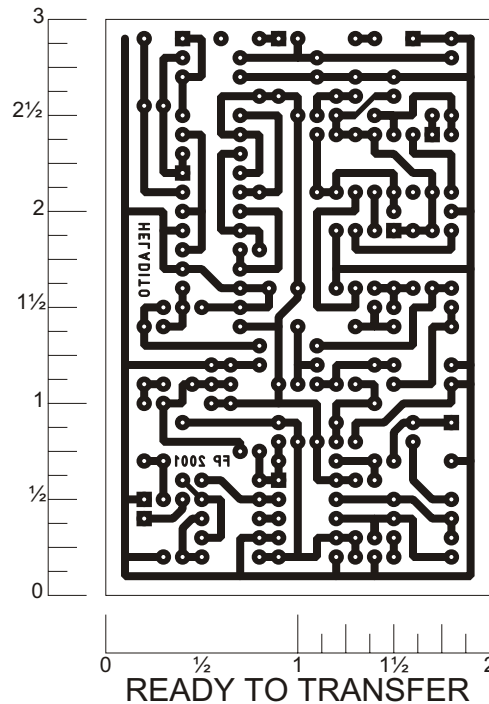


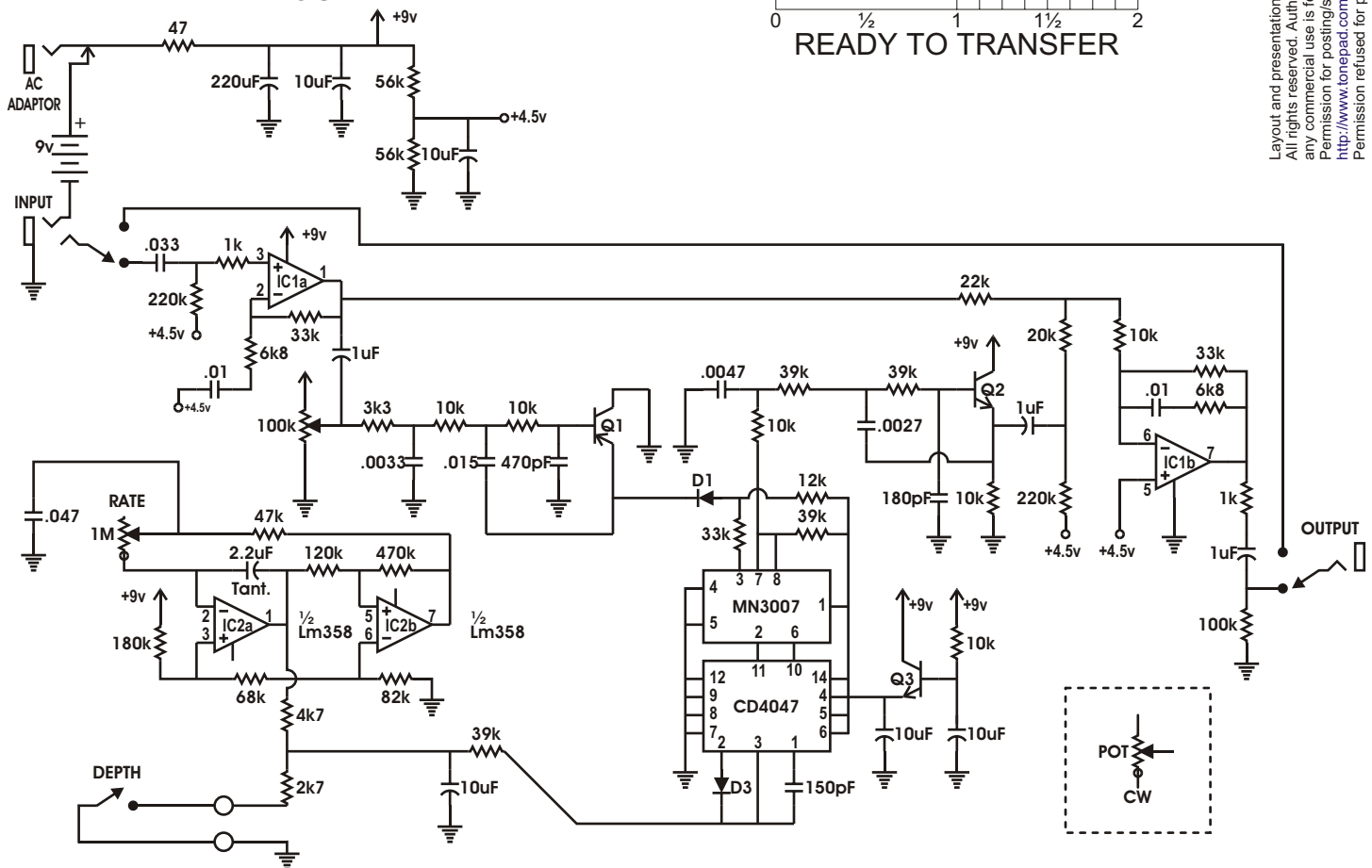
This circuit works like a Small Clone. I have removed the FET switching. Also there are two capacitors marked RED on the layout, you should put only ONE of them. Experiment. Pads A, B, C, D, E are for experimentation, nothing should be connected to them. Off board components except for the potentiometers are not shown on the layout. Small Clone is a registered trademark owned by EH.



LAYOUT



READY TO TRANSFER



Parts List

Resistors

1 - 47ohm
2 - 1k
2 - 56k
6 - 10k
4 - 39k
3 - 33k
1 - 3k3
2 - 220k
2 - 6k8
1 - 12k
1 - 22k
1 - 20k
1 - 100k
1 - 4k7
1 - 2k7
1 - 82k
1 - 68k
1 - 47k
1 - 470k
1 - 180k
1 - 120k

Pots

1 - 1M Log.
1 - 100k Trim.

Capacitors

3 - 1uF
1 - 220uF
5 - 10uF
1 - 0.047
1 - 0.0047
1 - 0.0027
1 - 180pF
1 - 100pF
2 - 0.01
1 - 2.2uF Tant.
1 - 470pF
1 - 0.015
1 - 0.0033
1 - 0.033

Diodes

2 - 1N4148 or 1N914

Transistors & ICs

IC1 - 4558
IC2 - LM358
1 - CD4047
1 - MN3007
1 - 2N5087
2 - 2N5088

Other

1 - SPST switch