



ACK Whitepaper

Implementation of Software
and Software Queues

Aagon Consulting GmbH
Coesterweg 45
59494 Soest

Fon: +49 (0)2921 - 789 200

Fax: +49 (0)2921 - 789 244

www.aagon.com

info@aagon.com

Content

CONTENT	3
1. START SCREEN	4
1.1 General	4
1.2 Overview functions	4
1.3 Icons	5
1.4 List	5
2. SOFTWARE	6
2.1 Filtering software packages	6
2.2 Working with software packages	6
2.2.1 Add	6
2.2.2 Update software	6
2.2.3 Delete	6
2.2.3 Send software to Rollout-Server	7
2.2.4 Software Import/Export	7
2.2.5 Additional features	7
2.3 Adding software packages	8
2.3.1 Software Repository	8
2.3.2 ZenWorks	9
2.3.3 External Silent	10
2.3.4 Script Repository	12
2.3.5. Netinstall	13
2.4 Edit Software	14
3. EXPORT/IMPORT SOFTWARE	15
3.1 Export Software	15
3.2 Import Software	15
4. QUEUES	17
4.1 Software queues	17
4.2 New Queue	19
4.3 Edit Queue	20
4.4 Import/Export Queue(s)	22
4.5 Backup Settings	23
4.6 Using queues	24

1. Start screen

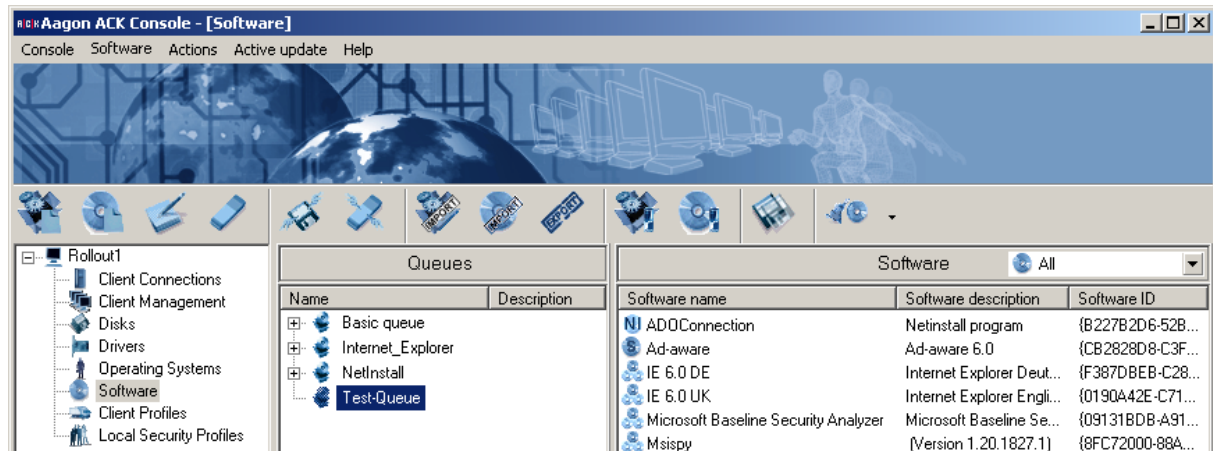



Figure 1. 1

1.1 General

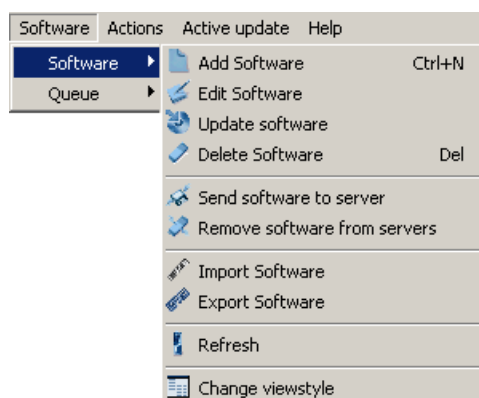
In order to distribute software besides the operating system installation with ACK, it's possible to create *Software Queues*. A *Software Queue* is a queue, in which individual software products wait and will be installed one after the other on the PC. In order to create *Software Queues* or to display those already been created, start the *Software* program.

If you have just started the Aagon ACK Console, select in the right-hand window or click on the  *Software* icon in the left-hand window.

1.2 Overview functions

For better orientation here an overview is given about the functions, that are available to you in this program:

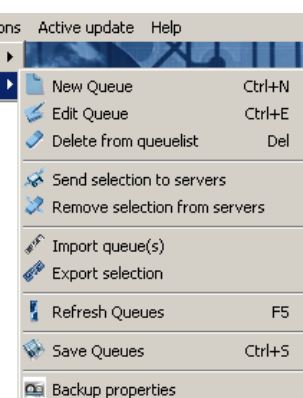
If you start *Software* for the first time, this screen of course will be empty. To create software queues it is recommended to integrate software installation packages under *Software* first.



After this you can compose your *Queues* using the single software packages.

Besides *Console*, *Actions*, *Active update* and *Help* the *Software* menu is available. It is divided into *Software* and *Queue*.

To open the Context Menu either click the right mouse



button in the area *Queues* or in the area *Software*.

Figure 1.2. 1

Figure 1.2. 2

1.3 Icons

Here you see a list of the icons and their meanings:

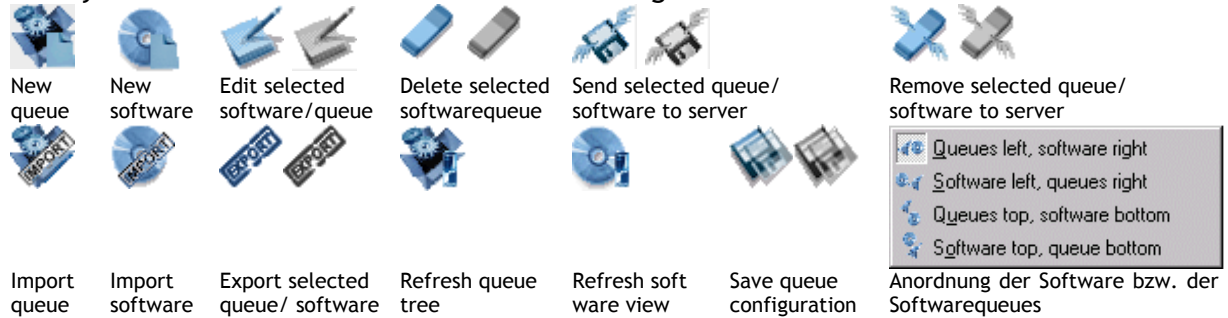


Figure 1.3. 1

Depending on the element you have selected from the list, the icons will either be activated (blue) or deactivated (grey).

1.4 List

The list is divided into the windows *Queues* and *Software*:

Under *Queues* in the columns *Name* and *Description* all your software queues are listed.

Under *Software* with the columns *Software Name*, *Software Description* and *Software ID* you find your software installation packages, integrated so far.

2. Software

2.1 Filtering software packages

Besides the caption in the *Software* window you find a combobox. With this you can filter the displayed software packages as follows:

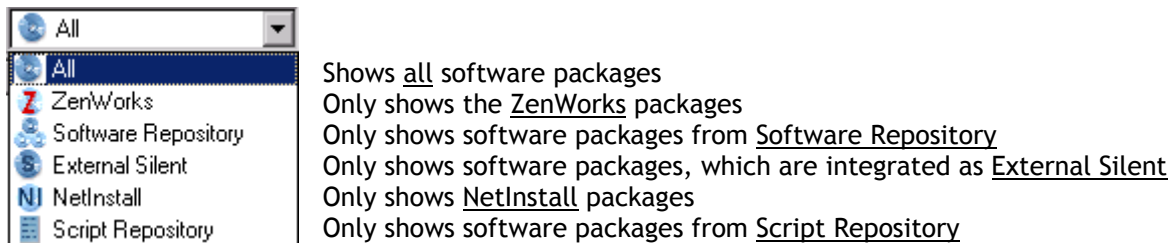


Figure 2.1. 1

Among in the columns *Software Name*, *Software Description* and *Software ID* the already integrated software packages are listed. With a click into the particular column header you can change the sort order ascending or descending.

2.2 Working with software packages

2.2.1 Add

Mit *Add Software* oder *Ctrl+N* fügen Sie neue Software hinzu.

Wenn Sie ein bestehendes Paket bearbeiten wollen, markieren Sie es mit der Maus und wählen Sie *Edit Software*.

2.2.2 Update software

With *Update Software* you can bring your software packages and scripts from the appropriate *Repositories* up to date. Mark in addition one or more of desired entries, select *Update Software* and confirm the following question with *Yes*. The selected entries now are adjusted with the associated *Repository* and if necessary updated.

2.2.3 Delete

Wenn Sie Software löschen wollen, markieren Sie dazu ein oder mehrere Pakete mit den bekannten Tastatur- und Maustasten-Kombinationen wie *Ctrl+A*, linke Maustaste+Shift, *Ctrl*+ linke Maustaste, *Shift+Down* usw. und wählen Sie *Delete* oder *Del*.

2.2.3 Send software to Rollout-Server

With *Send software to server* you can distribute each software to any other rollout server.

Just select the server(s) on which you want to send or delete the queue/software ...

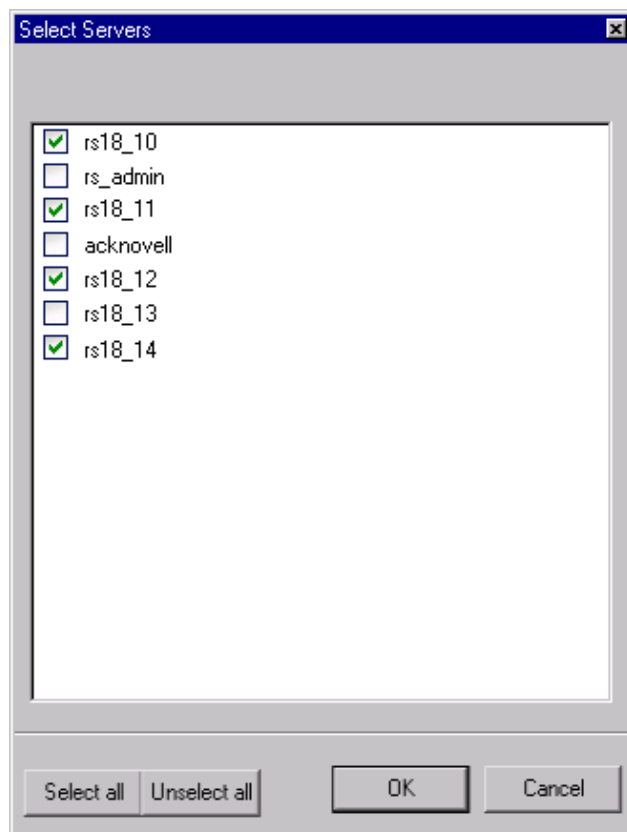


Figure 2.2.3. 1

... and confirm with **OK**.

If you change your mind, you can abort the process with **Cancel**.

With *Remove software from servers* you can delete every software that you have sent to other rollout servers.

2.2.4 Software Import/Export

With *Import Software* you can import software.

With *Export Software* you can export software.

2.2.5 Additional features

Using Refresh the data will be reloaded and renewed in the list.

With Change viewstyle you change the view of your software list. Only the icons and names of your software packages are shown.

If you mark an entry and select Open according folder in the context menu, the file explorer is started and opens the folder, in which the software resp. the script is stored.

2.3 Adding software packages

If *ZenWorks* is installed the following five possibilities to integrate software packages are available. Just select one of the options click *Next* and you arrive in the pertinent screen:

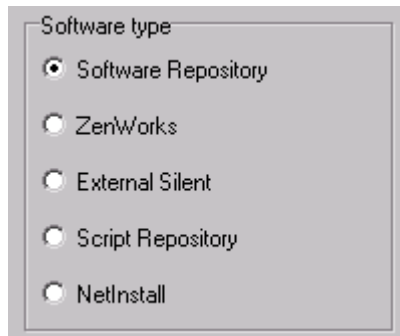


Figure 2.3. 1

2.3.1 Software Repository

Here you find all software packages which you have integrated into ACK with the help of the *Software Repository* program listed by *Name*, *GUID* and *Description*. The packages already integrated under *Software* are displayed grey.

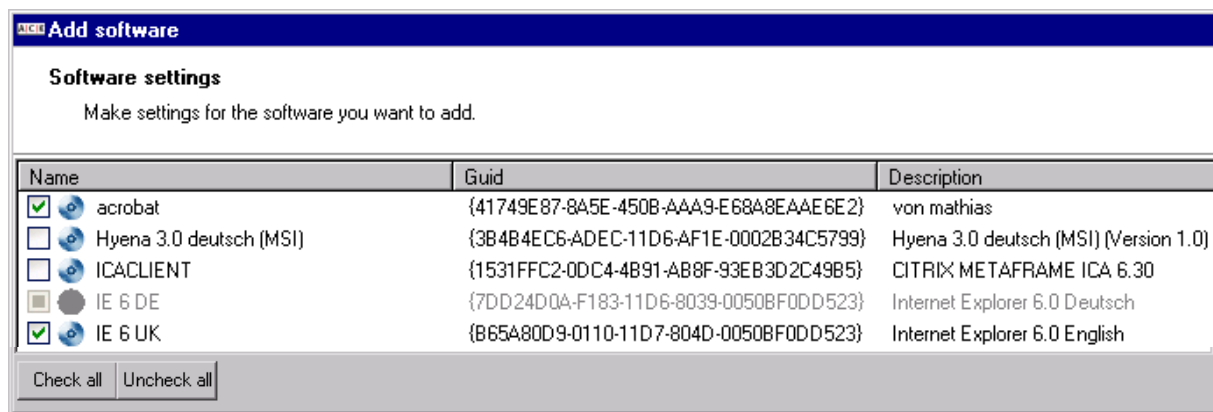


Figure 2.3.1. 1

To integrate a software package into the program *Software* you have to mark it by activating the checkbox ☐ of the desired software ☒ and confirm with *Finish*. After this the selected packages are transferred.

You can select all packages with *Check all* and with *Uncheck all* you cancel your selection. With *Back* you get to the previous screen and with *Cancel* you abort the program.

If you choose *Cancel* the warning follows:

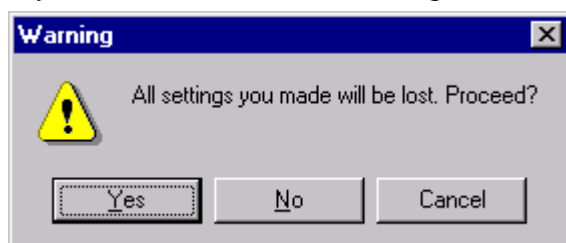


Figure 2.3.1. 2

With *Yes* the program is definitely finished.

2.3.2 ZenWorks

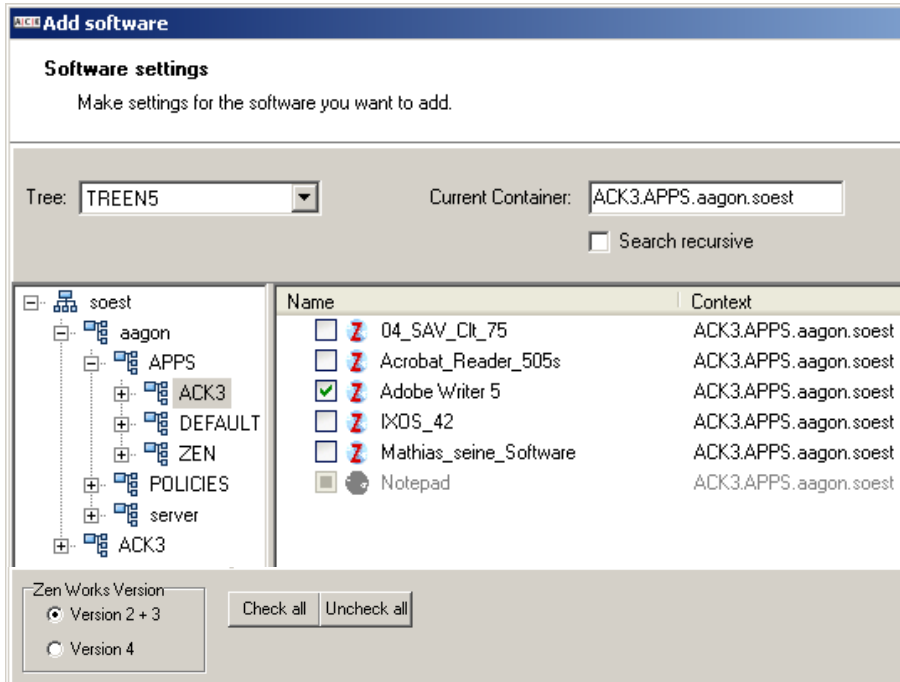




Figure 2.3.2. 1

Tree: Here you can choose the tree, in which you want to search for packages.

Current Container: In that field the actual folder is shown.

Search recursive: If you activate this checkbox ☒ the search includes the *Tree*, the *Organisations* and *organisational units* of ZenWorks packages. The tree and the located packages with *Name* and *Context* are displayed in the two windows beneath. You also can navigate through the tree with the help of the icons  and  to search for packages.

Under these windows you can adjust the used *Zen Works Version* by activating the corresponding radio button. This ensures that the installation of the packages will be executed correctly.

To integrate software packages into the program *Software* you have to mark it by activating the checkbox ☐ of the desired software ☒ and confirm with *Finish*. After this the selected packages are transferred to your rollout server.

Above all you can select all packages with *Check all* and with *Uncheck all* you cancel your selection. With *Back* you come to the previous screen and with *Cancel* you abort the program.

If you choose *Cancel* the warning follows:

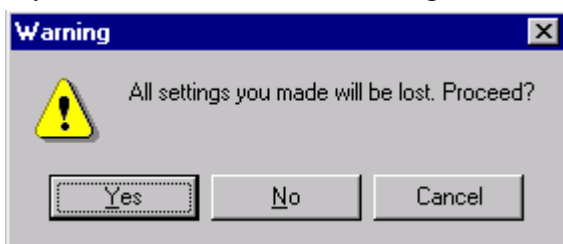


Figure 2.3.2. 2

With *Yes* the program is definitely finished.

2.3.3 External Silent

This screen provides both to create and to change *External Silent* software.

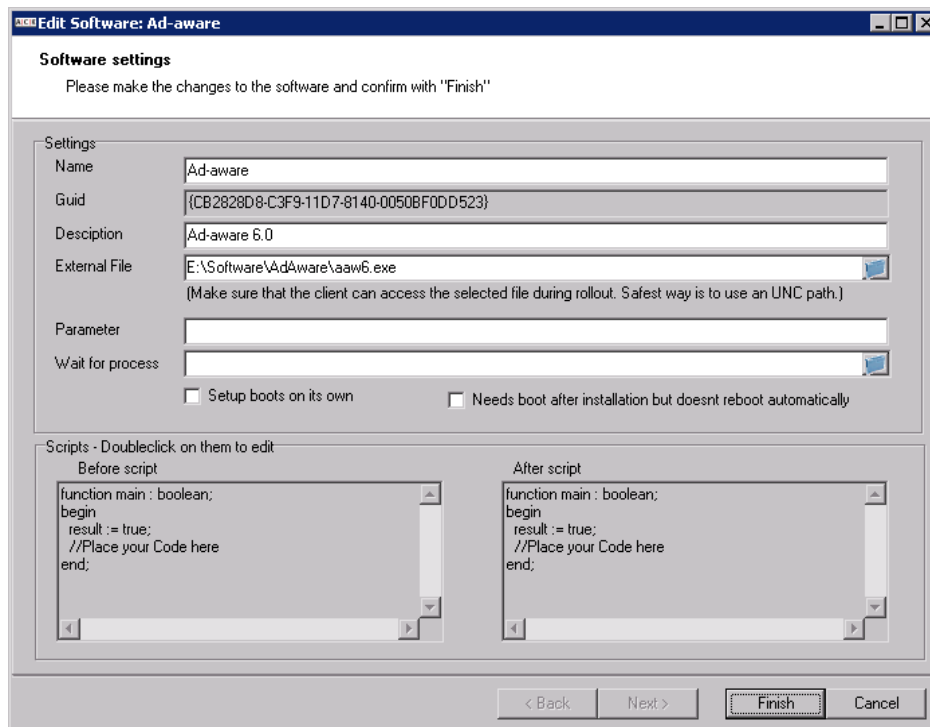




Figure 2.3.3. 1

- Name:** Enter a name for the software you want to integrate.
- Guid:** The program already has automatically generated a Global Unique Iden-
tifier.
- Description:** Enter a handy description, if you want.
- External File:** Now click on the  symbol, in order, for example, to find the Setup.exe file. After you have found the setup file mark it and confirm with *Open*. The path and file name will automatically be transferred.
Make sure that the registered path is available at the time of the installation as indicated! Otherwise the installation will fail! If you want to make it completely sure, enter the UNC path.
- Parameter:** Enter the *Parameter* for the Silent Installation here, for example: For the installation of the Internet Explorer you have to enter */Q* here.
- Wait for process:** Here you can determine, that the Queue only will be continued, after the given process has finished. In many cases, this will be, for example, the *_ISDEL.EXE* process. Only when this is finished firm, the software queue can begin with the installation of other software packages. With a click on the icon  you can comfortably look for the file concerned in your file system.

After the installation of a software often a reboot is needed. The necessary settings you can take as follows:

- ☒ **Setup boots on his own:** Activate this switch, if the software is able to execute the *Reboot* automatically on its own.
- ☒ **Needs boot after installation but doesn't reboot automatically:** Activate this switch, if the software needs a manual *Reboot*. ACK will make sure that the system will be automatically rebooted after the installation, so that the installation is properly finished.

The two windows among show the scripts with which the installation of your software can be controlled.

Before Script: With a doubleclick into the desired window you can write a script that will be executed before and ...

After Script: ... after the installation. In both cases you can write the script using *Edit Script*.

The Script **must** be written using Delphi-Script and contain the following, preset elements!

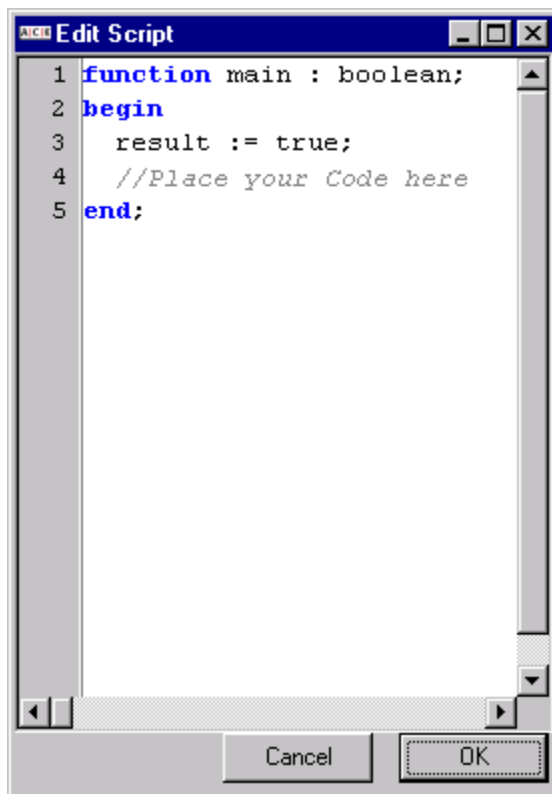


Figure 2.3.3. 2

The return value "result" determines, whether or not the script will be processed. Between **begin** and **end** you can insert other commands.

You can [get](#) more detailed information from the according Delphi Script Manuals.

With *Finish* the software will be integrated; with *Back* you get to the previous screen and with *Cancel* you abort the program.

If you choose *Cancel* the warning follows:

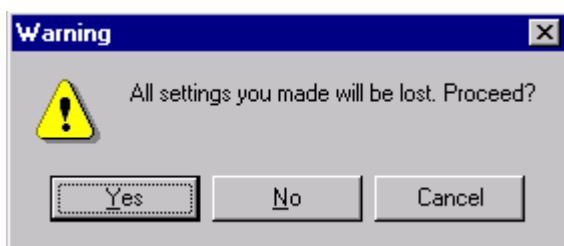


Figure 2.3.3. 3

With *Yes* the program is definitely finished.

2.3.4 Script Repository

Here you find all scripts which you have integrated into ACK with the help of the *Script Repository* program listed by *Name*, *Description* and *GUID*. In the *Preview* window you can in addition view the content of marked scripts. The scripts already integrated under *Software* are displayed grey.

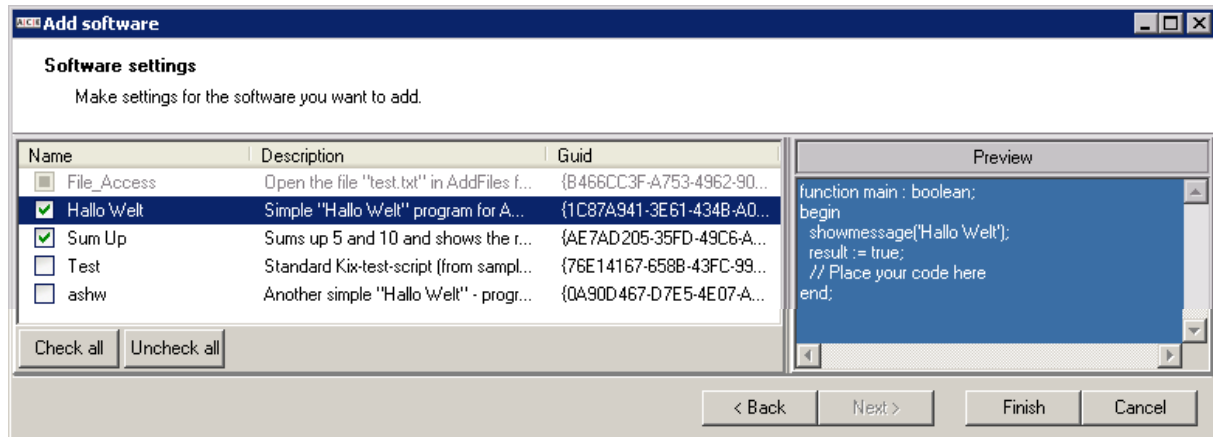


Figure 2.3.4. 1

To integrate scripts into the program *Software* you have to mark them by activating the checkbox ☐ of the desired script ☒ and confirm with *Finish*. After this the selected scripts are transferred.

You can select all scripts with *Check all* and with *Uncheck all* you cancel your selection. With *Back* you get to the previous screen and with *Cancel* you abort the program.

If you choose *Cancel* the warning follows:

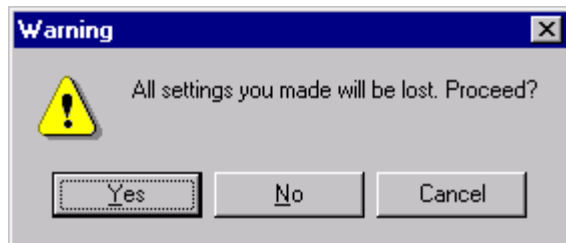



Figure 2.3.4. 2

With *Yes* the program is definitely finished.

2.3.5. Netinstall

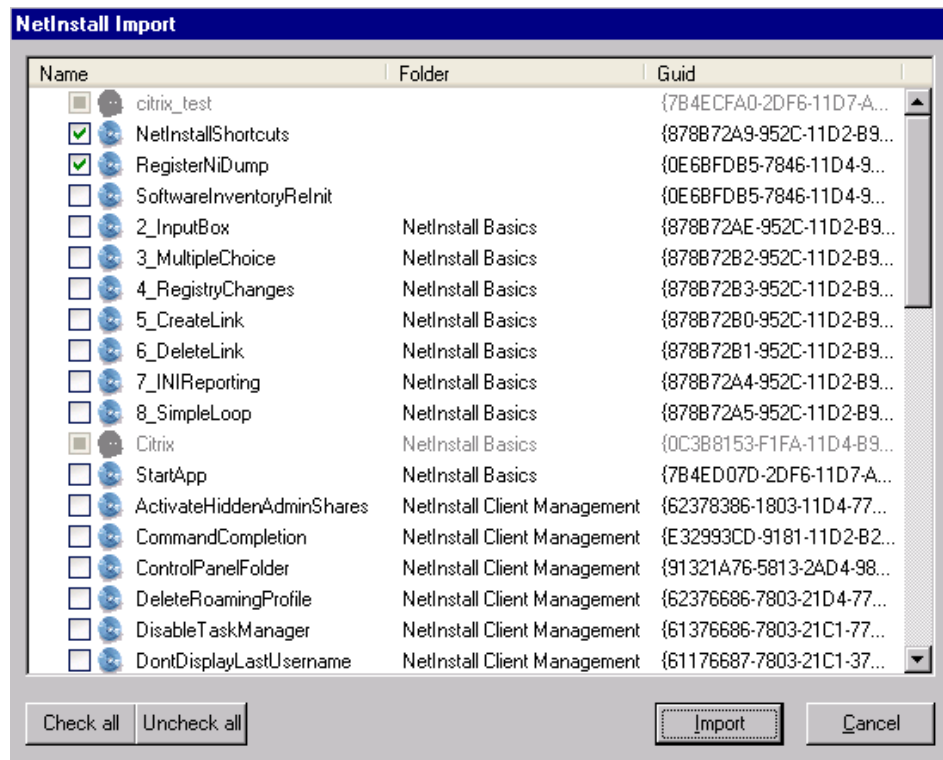
With a click on the symbol  open the dialog to search for the *Netinstall Path*. Look in that dialog for the desired *NIInst32.exe* mark it and confirm with *Open*.

Now click on the symbol  to select the *Database*. Select the desired **.nid* and confirm with *Open*.

Under *Netinstall Version* select now, whether you use the *Standard-* or *Enterprise* version and finally click the button *Browse DB*.

This opens the *NetInstall Import* screen:

NetInstall packages that are already integrated are displayed grey.



Activate the checkbox ☐ of the desired software ☒ and click *Import* in the end.

You can select all packages with *Check all* and with *Uncheck all* you cancel your selection. With *Cancel* you abort the whole selection.

Figure 2.3.5. 1

If all desired NetInstall packages are imported confirm with *Finish* to integrate them.

With *Back* you get to the previous screen and with *Cancel* you abort the program.

If you choose *Cancel* the warning follows:

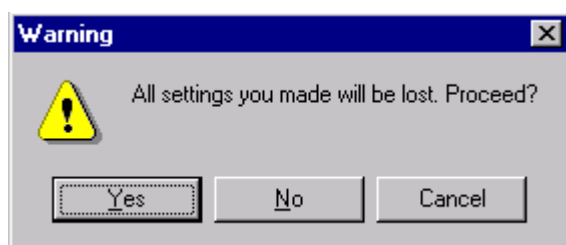


Figure 2.3.5. 2

With *Yes* the program is definitely finished.

2.4 Edit Software

In this screen you can edit the most of your software packages. These are packages from *ZenWorks* and *NetInstall*, where you now can also edit the scripts, as well as software that was integrated as *External Silent*. This edit screen is identical to the *External Silent* screen.

Software from the *Software Repository* and scripts from the *Script Repository* you can't edit here. On the screen only *Name*, *Guid* and *Description* are displayed together with the note, that this software cannot be edited. But you can help yourself and edit it directly in the program *Software Repository* resp. *Script Repository*.

When you afterwards leave this screen with *Finish* the newest version from the *Software Repository/Script Repository* will be integrated.

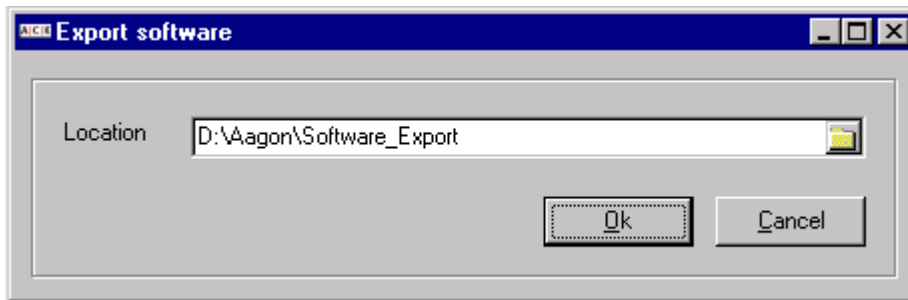
With *Finish* you end the program and your changes will be made. With *Cancel* you abort the program without any changes.

3. Export/Import Software

3.1 Export Software

With *Export Software* you can export software/scripts to any directory on your hard drive or network that you want to. It's better to first create that directory to where you want to export your package.

Select a software/script that you want to export, with a click of the mouse from the list. Select *Export Software* in the Menu or the Context Menu. The following dialog window will open:




By clicking with the mouse on the  icon, a *Dialog* will open, in which you can search for and select the desired directory.

Figure 3.1. 1

With *Cancel* you can abort the export; with *OK* the export process will start.

Notice: During the export of software/scripts the whole software/scripts including the installation files from the *Software Repository/Script Repository* is exported to the selected folder. In case of import it is checked whether the application already exists in the *Software Repository/Script Repository*. If it exists you are asked whether it should be overwritten:

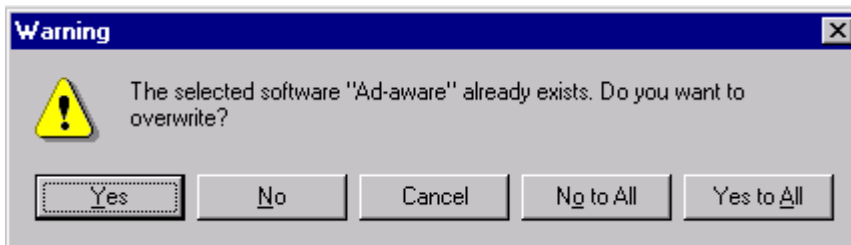
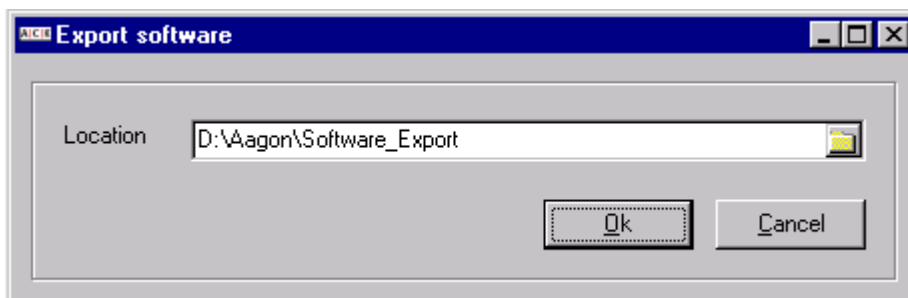


Figure 3.1. 2

If it shall be overwritten or doesn't exist the software/script will be integrated first into the *Software Repository/Script Repository* and then from there replicated to the particular rollout server.

3.2 Import Software

Vice versa, you can import software from such a directory into any server. Just select *Import Software* under Menu or Context Menu. The following dialog window will open:




By clicking with the mouse on the  icon, a *Dialog* will open, in which you can search for and select the desired directory.

Figure 3.2. 1

With *Cancel* you abort the import; with *OK* the *Import Software* screen is opened.

Mark all software packages in the table that you would like to import. To do this, you have all of the usual window key combinations available for your use such as Ctrl+A, the left mouse key+Shift, Ctrl+left mouse key, Shift+Down etc ...

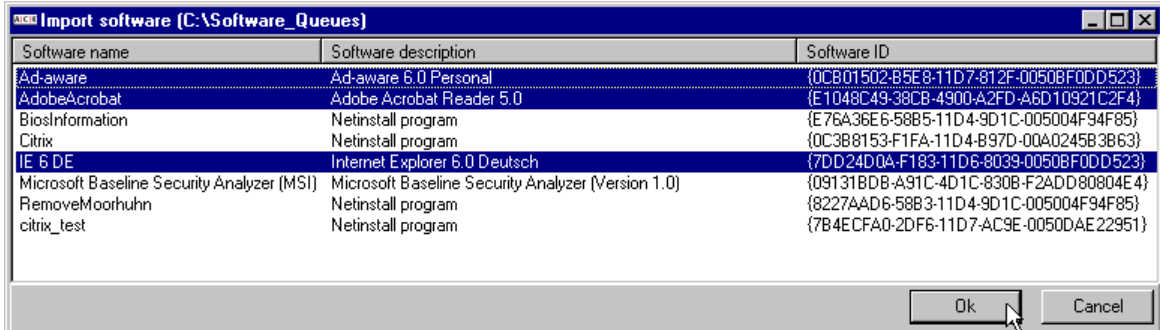




Figure 3.2. 2

With *Cancel* you will abort your selection and automatically be taken back to the start screen. With *OK* you start the import.

After finishing the import the new software will be displayed in the list.

4. Queues

4.1 Software queues

In the *Queues* window there are all software queues you already created. They are listed by *Name* and *Description*. Ahead each queue you find the icon . With that icon you can open a queue to look which software packages or other queues it contains. With the icon  an opened queue is closed again.

With *New Queue* or *Ctrl+N* you create a new queue.

If you want to edit an existing queue, mark it with the mouse and select *Edit Queue* or *Ctrl+E*.

If you want to delete one or more queues mark them with the usual Windows key or mouse key combinations like *Ctrl+A*, left mouse key+*Shift*, *Ctrl+* left mouse key, *Shift+Down* etc.. and choose *Delete from queuelist* or *Del*.

Then the following security message appears:

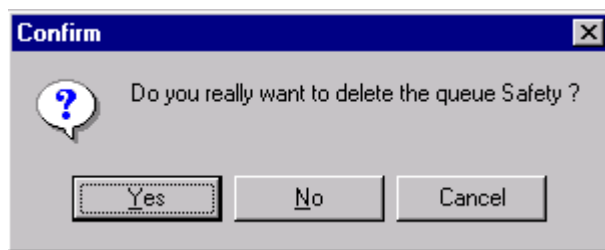


Figure 4.1. 1

With *Yes* the queue will be deleted; with *No* or *Cancel* it remains preserved.

With *Copy Queue* you can make a copy of each queue you previously marked. The new queue will automatically get the prefix *CopyOf_*. You now can work on and rename this queue as desired.

Using *Send selection to servers* you can distribute each queue to other rollout servers.

Just select the server(s) on which you want to send or delete the queue/software ...

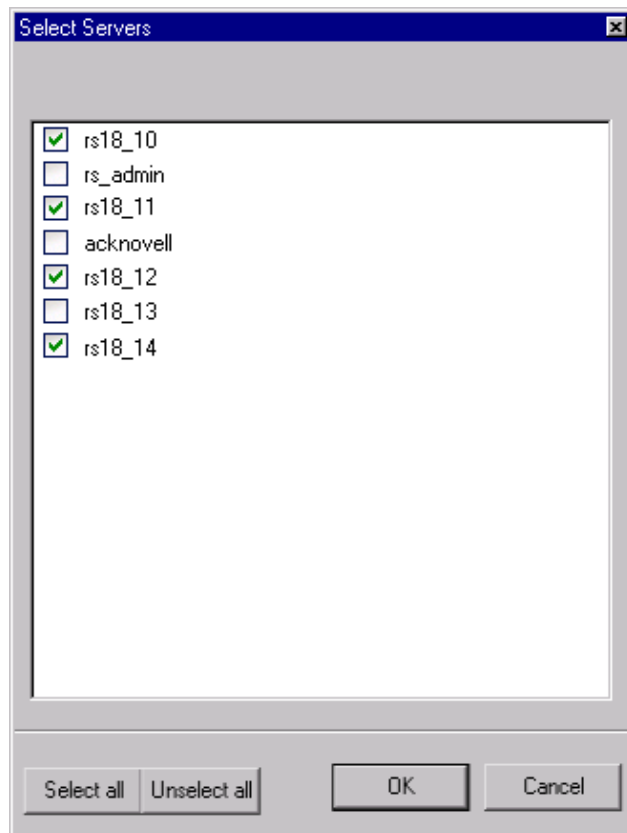


Figure 4.1. 2

... and confirm with *OK*.

If you change your mind, you can abort the process with *Cancel*.

Using *Remove selection from servers* you can delete every queue that you have sent to other rollout servers.

With *Import queue(s)* you can import queues.

With *Export selection* you can export queues.

Refresh Queues or *F5* reads all information newly and displays it.

If you have created new queues or changed existing queues, the function *Save Queues* or *Ctrl+S* will be activated. With that all settings and changes are saved and afterwards replicated to your rollout server.

If you forgot to save you will be remembered when leaving the program as follows:

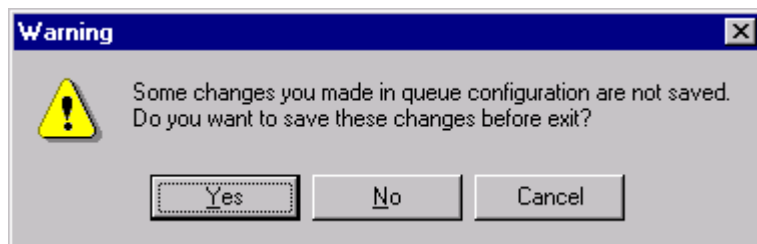


Figure 4.1. 3

With *Yes* the queue will be saved; with *No* or *Cancel* you stay in the program.

4.2 New Queue

The program now has created a new entry named *New Queue* and *<no description>*.

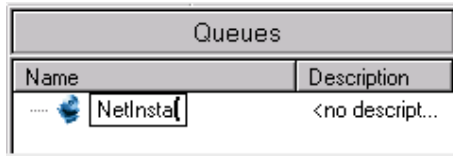


Figure 4.2. 1

You can easily overwrite the name of the queue with the desired name e. g. *NetInstall* and finish with *Enter*. You only can change the *Description* with *Edit Queue*.

To fill the new queue with software packages easily mark the desired packages in the *Software* window. To do this, you have all of the usual window key combinations available for your use such as Ctrl+A, the left mouse key+Shift, Ctrl+left mouse key, Shift+Down etc.

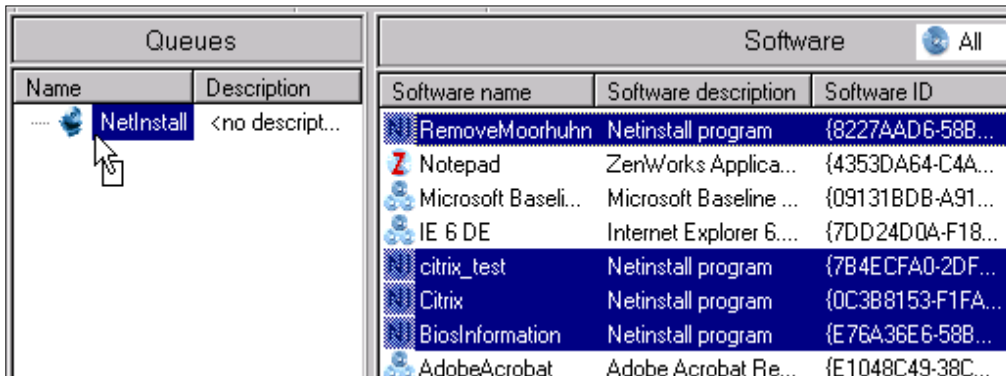
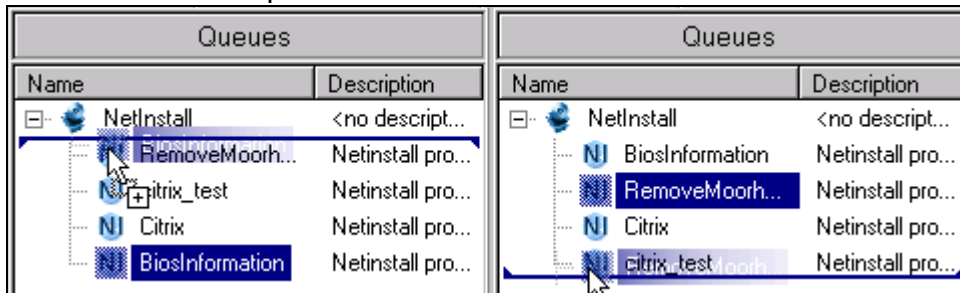


Figure 4.2. 2

Now press the left mouse button, hold it down and simply drag the marked packages into the new queue.

To change the order of software within the queue click ahead the desired software on the icon, hold down the left mouse button and move the package up or down, until its final position is reached. Then release the mouse button.

In addition an example:



Moving software package up ...

moving software package down.

Figure 4.2. 3

You can also nest software queues into one another. That could look for example this way:

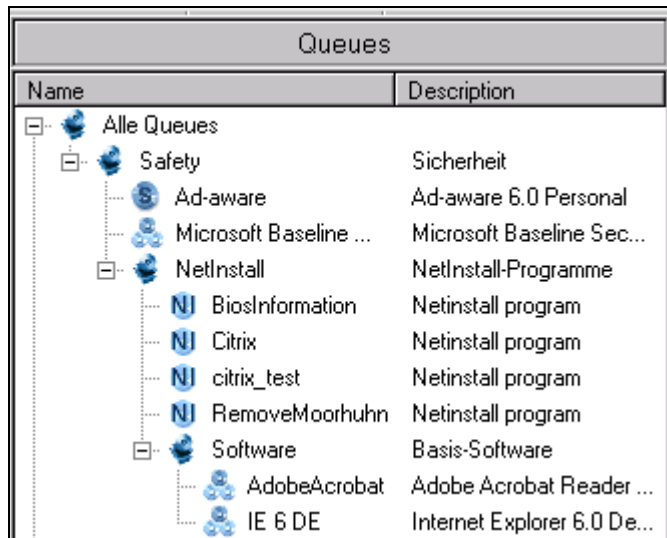


Figure 4.2. 4

During the installation the queues are processed top down.

4.3 Edit Queue

This screen is to edit *software queues*. If you make changes, you at the latest will be advised when saving, that changes may affect other queues. The following warning appears:

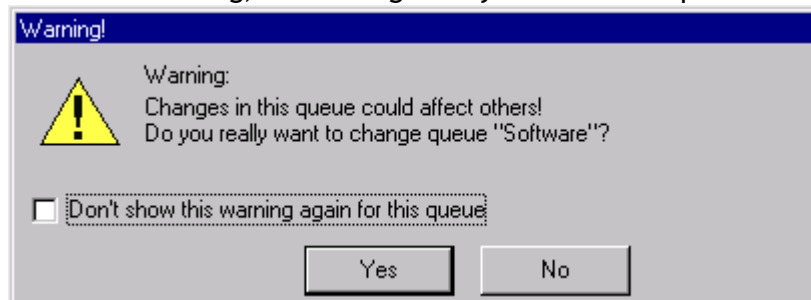


Figure 4.3. 1

With **Yes** the changes will be made, with **No** not.

If you activate the checkbox ☐ *Don't show this warning again for this queue* ☒, this warning will not appear any longer and changes are always executed.

Guid: The program has automatically generated a Global Unique Identifier which cannot be changed.

Name: Instead of this you can change the name and...

Description: the description of your software queue.

The two windows among show the scripts with which the installation of your queue can be controlled.

Before Script: With a doubleclick into the desired window you can write a script that will be executed before and ...

After Script: after the execution of the queue. In both cases the *Edit Script* screen will be opened.

The Script **must** be written using Delphi-Script and contain the following, preset elements!

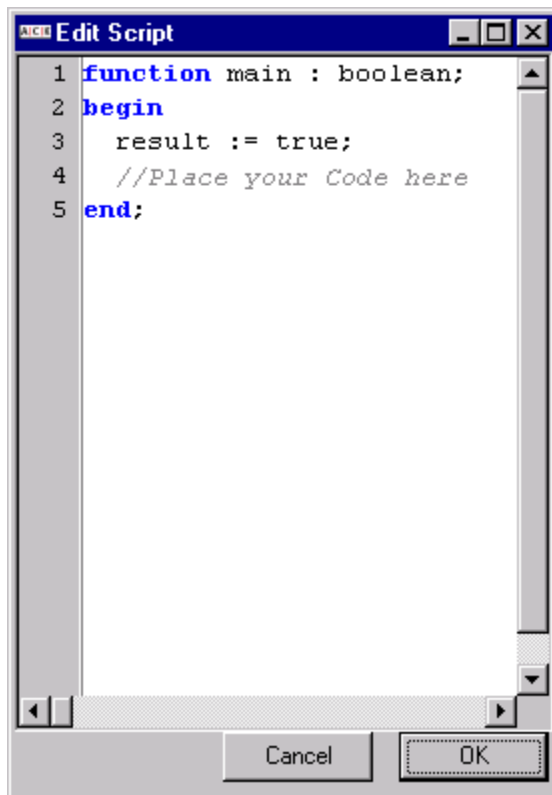


Figure 4.3. 2

The return value "result" determines, whether or not the script will be processed. Between **begin** and **end** you can insert other commands.

You can [get](#) more detailed information from the according Delphi Script Manuals.

With *OK* your changes will be accepted and with *Cancel* you abort the whole program.

If you choose *Cancel* the warning follows:

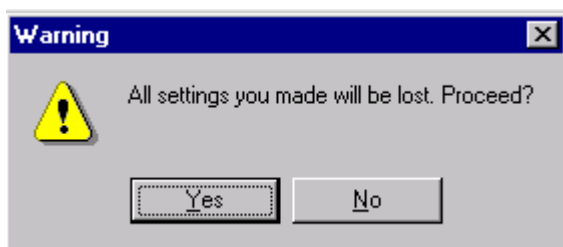


Figure 4.3. 3

With *Yes* the program is definitely finished.

4.4 Import/Export Queue(s)

Export selection: Using this, you can export selected queues to any directory on your hard drive or network that you want to. It's better to first create that directory to where you want to export your queues.

Select a software queue that you want to export, with a mouse click from the list. Select *Export selection* in the Menu or the Context Menu. The following dialog window will open:

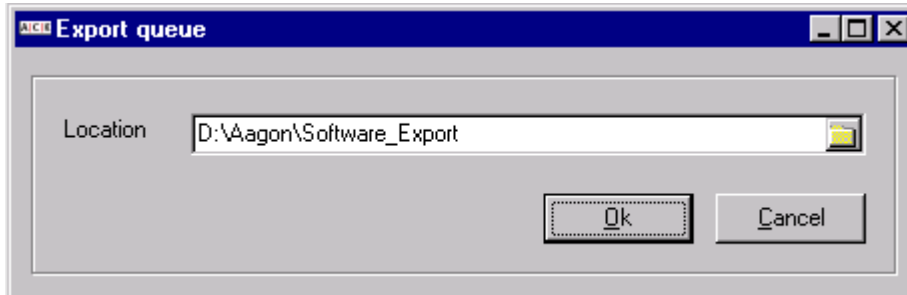



Figure 4.4. 1

By clicking with the mouse on the  icon, a *Dialog* will open, in which you can search for and select the desired directory.

With *Cancel* you can abort the export; with *OK* the export process will start.

Notice: During the export of queues the whole queue including the software/scripts and its installation files from the *Software Repository/Script Repository* is exported to the selected folder.

In case of import it is checked whether each application of the exported software queue already exists in the *Software Repository/Script Repository*. If it exists you are asked whether it should be overwritten:

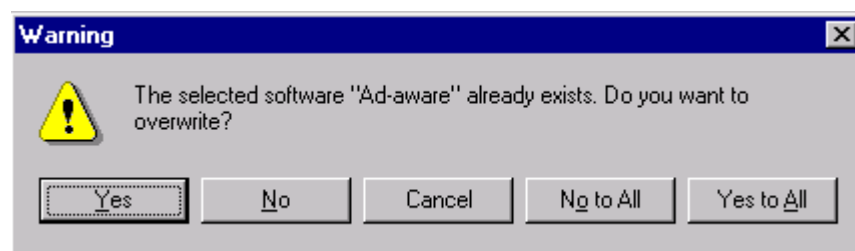


Figure 4.4. 2

If it shall be overwritten or doesn't exist the application belonging to the queue will be integrated first into the *Software Repository/Script Repository* and then from there replicated to the particular rollout server.

Import queue(s): Vice versa, you can import queues from such a directory into any server. Just select *Import Queue(s)* under Menu or Context Menu. The following dialog window will open:

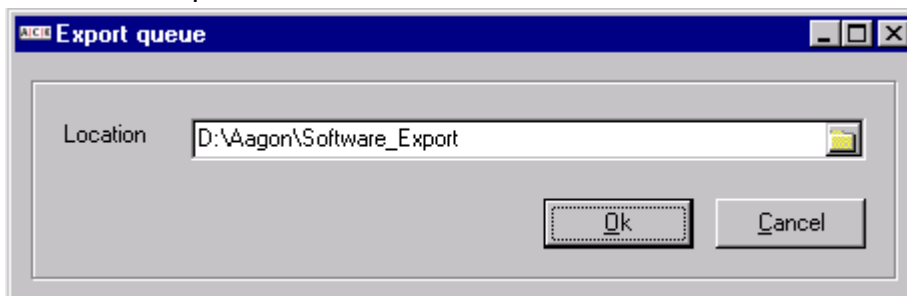



Figure 4.4. 3

By clicking with the mouse on the  icon, a *Dialog* will open, in which you can search for and select the desired directory.

With *Cancel* you abort the import.

OK opens the *Import Queue* screen.

Now mark in the table all software queues you want to import. To do this, you have all of the usual window key combinations available for your use such as Ctrl+A, the left mouse key+Shift, Ctrl+left mouse key, Shift+Down etc.

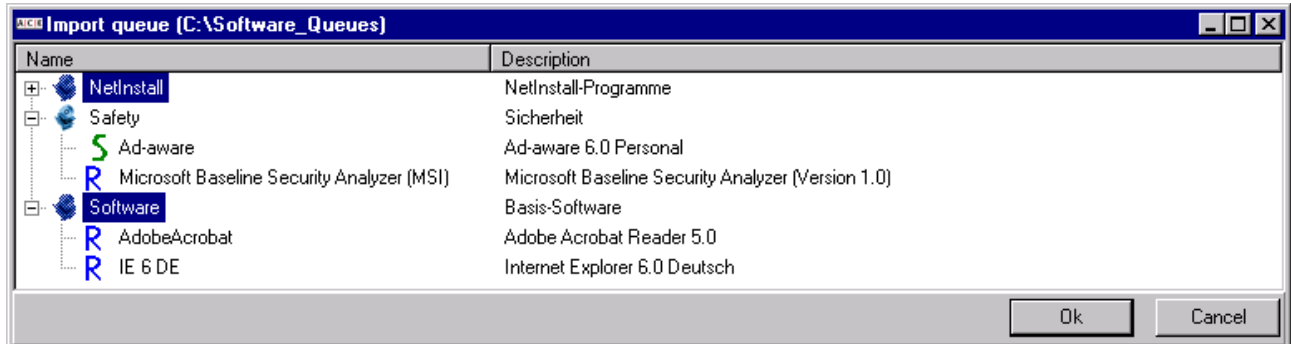


Figure 4.4. 4

With *Cancel* you will abort your selection and automatically be taken back to the start screen. With *OK* you start the import.


After finishing the import the new software queues will be displayed in the list.

4.5 Backup Settings

General settings

Under *Save last ... queue configurations* you can enter, how many configurations shall be saved. The default is 25, but you can enter as much as desired.

Existing backups

Here you find the list of the stored queue configurations with the columns *Date&time* and *Description*. In addition ahead of each queue configuration you see the  icon.

In order to restore a queue configuration, mark it with the mouse and click afterwards on the *Rollback* switch. The process is started immediately, the screen is closed. After completion of the procedure you return to the *Start screen* and the desired condition is established.

With the *Backup now* you can force an immediate backup. Then the actual status is saved and indicated and in the list with the annotation *Manual Backup*.

With *Cancel* you return to the *Start screen* without saving. With *OK* your settings are still stored.

4.6 Using queues

In order to use software queues during the installation of your computers, you must integrate the desired queue in the *Client Profile* of the computer. That happens as follows: Start in the Console the program *Client Profiles*. Create a new profile or select an existing profile in the tab sheet *Software Queue*.

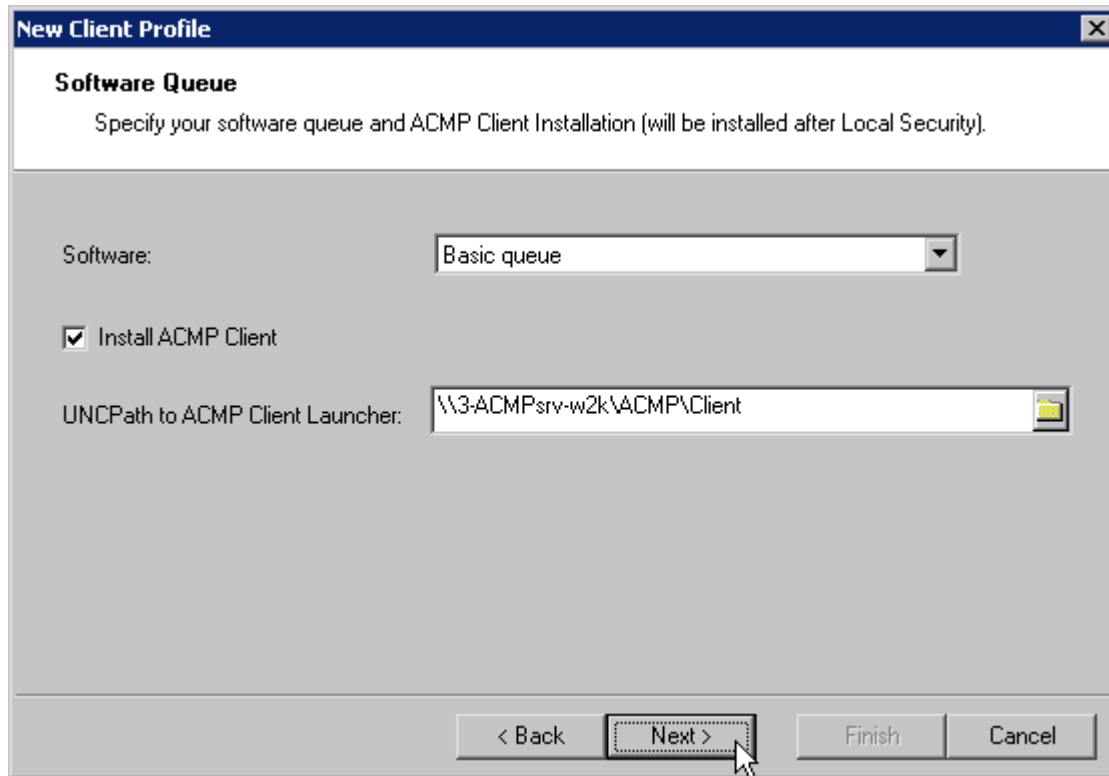


Figure 4.6. 1

Open the combobox *Software* and select the desired software queue. Enter all further settings and close the *Client Profile*.

As soon as you select this *Client Profile* with the installation of a computer, after the operating system installation all software packages, which are contained in the software queue, will be installed on this computer.

After completion of installation, you then have a computer, which has not only the desired operating system at its disposal, but also the suitable software.